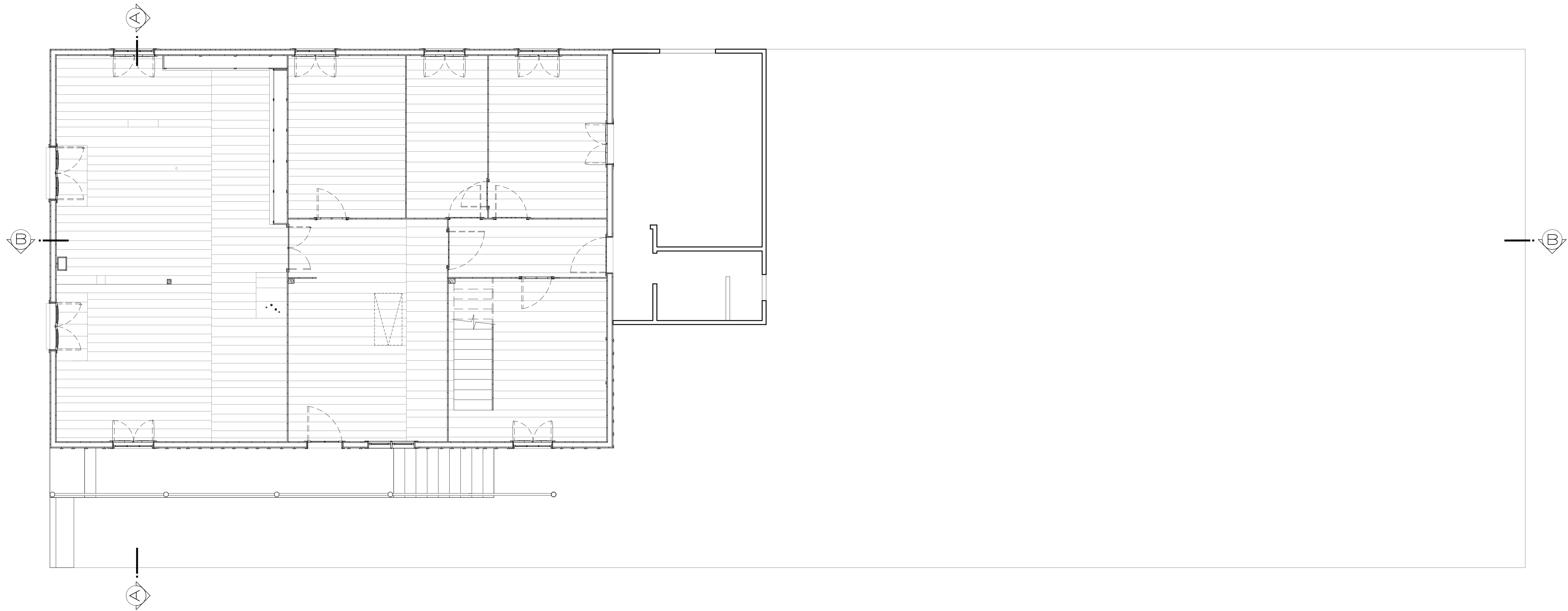


01 LEVANTAMENTO MÉTRICO - PLANTA BAIXA - PORÃO

ESC. 1/50



| | |
|--|---|
| EQUIPE DE ARQUITETURA E URBANISMO | |
| ARQ. E URB. - ANA LIA BRANCHI, DOMENICO RENOSTO, PABLO CÉSAR UEZ E RAMÓN OSMANSCHI | |
| PATRIMÔNIO: |  FL |
| ANTIGO ARMAZÉM FACHINI | |
| DISTRITO DE CRUZEIRA - CAXIAS DO SUL | 01 |
| LEVANTAMENTO MÉTRICO - PLANTA BAIXA - PORÃO | |
| | ESCALA 1:50 |

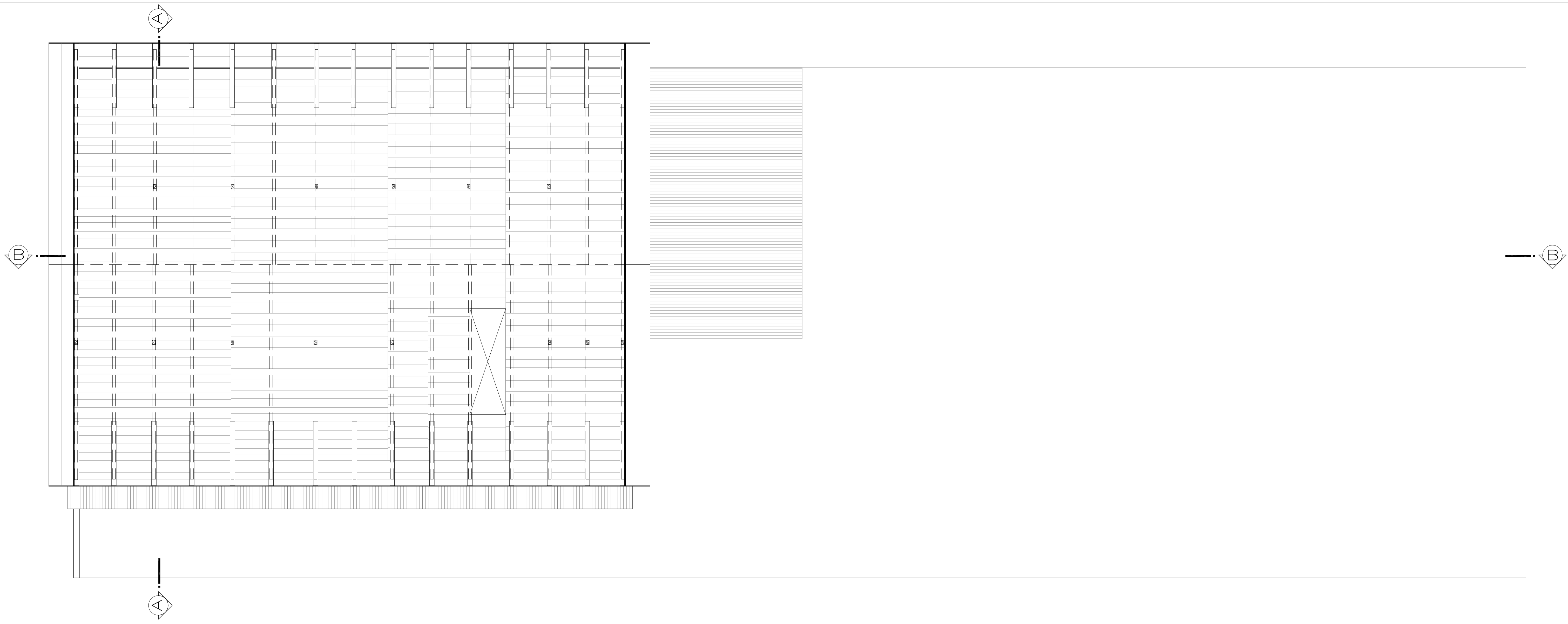


01 LEVANTAMENTO MÉTRICO - PLANTA BAIXA - TÉRREO

ESC. 1/50

0 1 2,5m

| | |
|---|---|
| EQUIPE DE ARQUITETURA E URBANISMO | |
| ARQ. E URB. - ANA LIA BRANCHI, DOMENICO RENOSTO, PABLO CÉSAR UEZ E RAMÓN OSMAINSCHI | |
| PATRIMÔNIO: |  |
| ANTIGO ARMAZÉM FACHINI | |
| DISTRITO DE CRUZEIRA - CAXIAS DO SUL | FL |
| LEVANTAMENTO MÉTRICO - PLANTA BAIXA - TÉRREO | 02 |
| ESCALA 1:50 | |

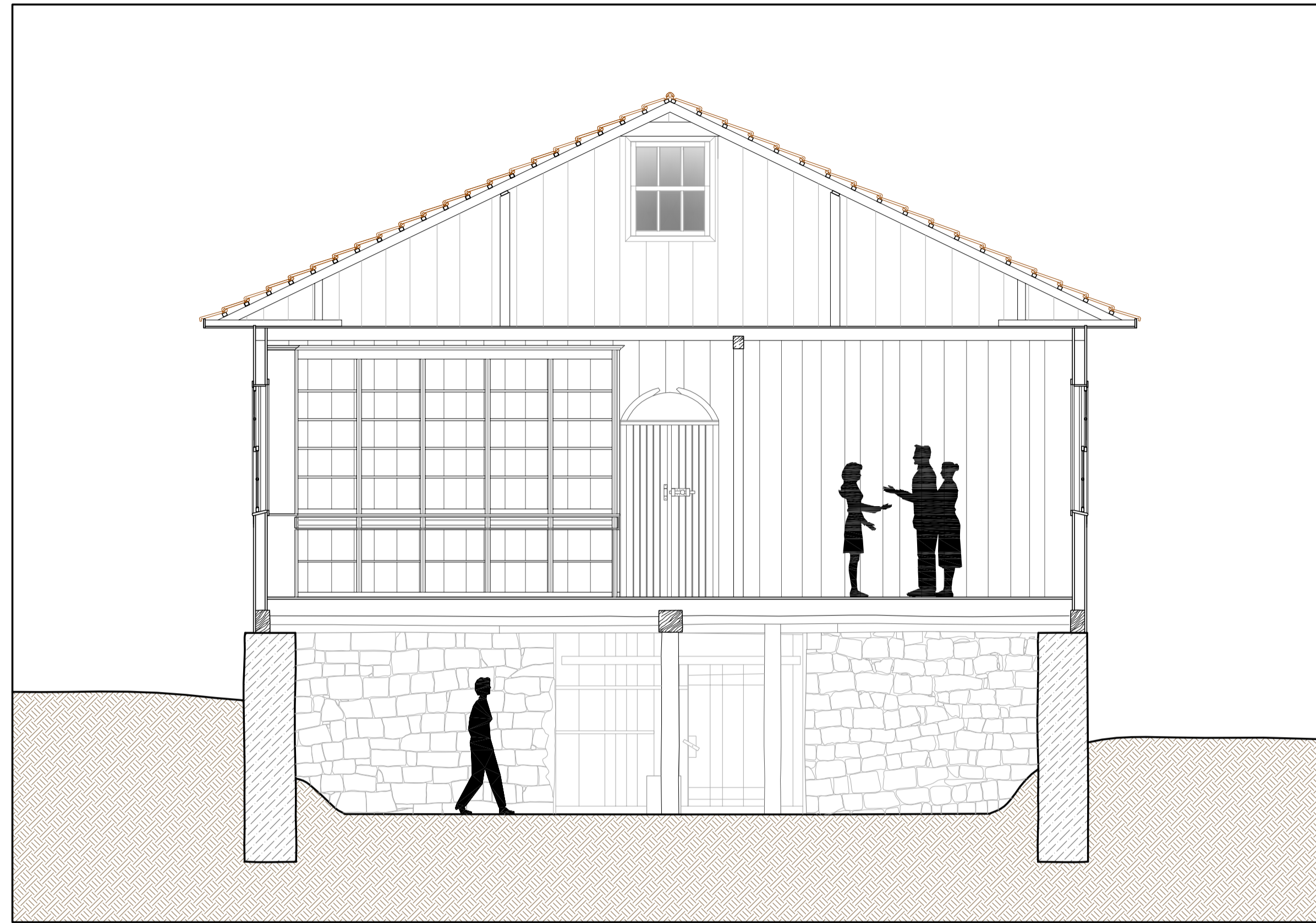


01 LEVANTAMENTO MÉTRICO - PLANTA BAIXA - SÓTÃO

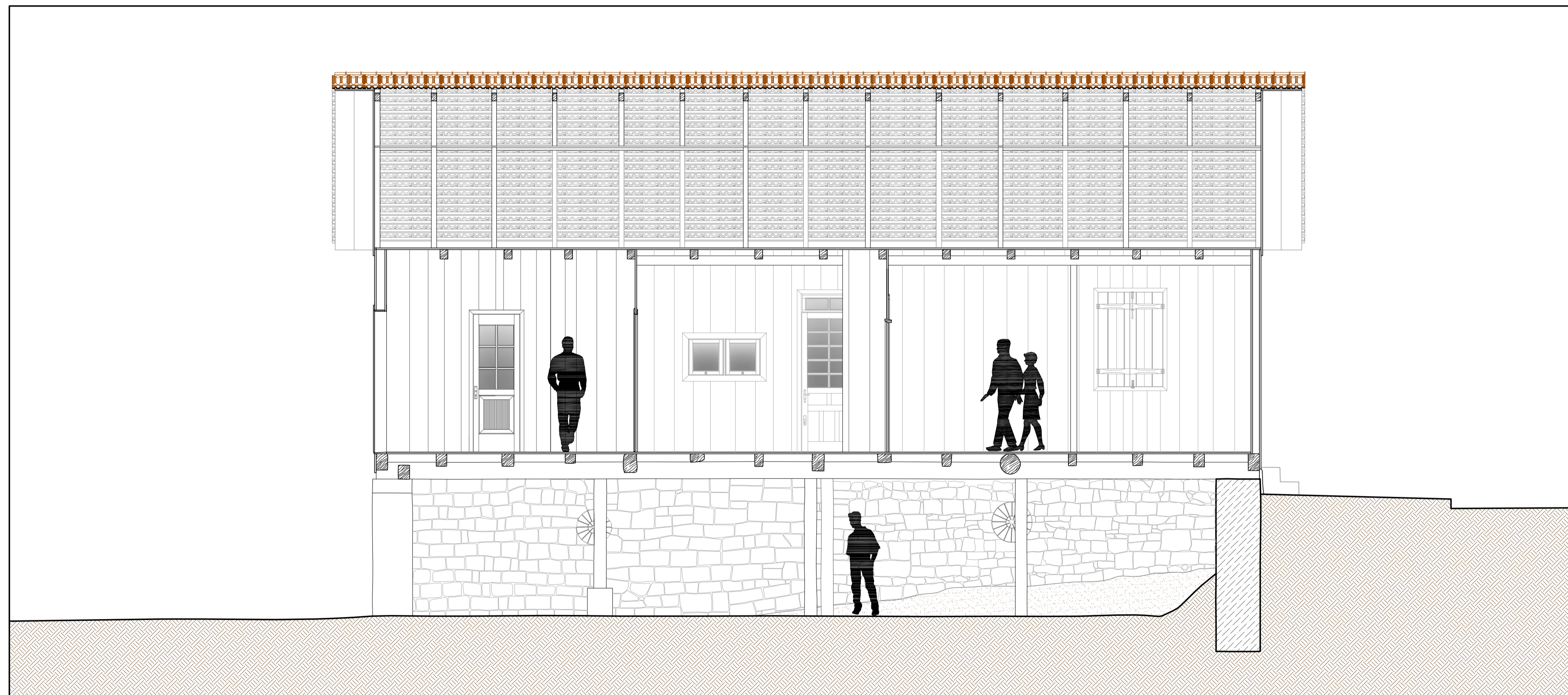
ESC. 1/50



| | |
|---|--|
| EQUIPE DE ARQUITETURA E URBANISMO | |
| ARQ. E URB. - ANA LIA BRANCHI, DOMENICO RENOSTO, PABLO CÉSAR UEZ E RAMÓN OSMAINSCHI | |
| PATRIMÔNIO: |  FL 03 |
| ANTIGO ARMAZÉM FACHINI | |
| DISTRITO DE CRUÍVA - CAXIAS DO SUL | |
| LEVANTAMENTO MÉTRICO - PLANTA BAIXA - SÓTÃO | ESCALA 1:50 |



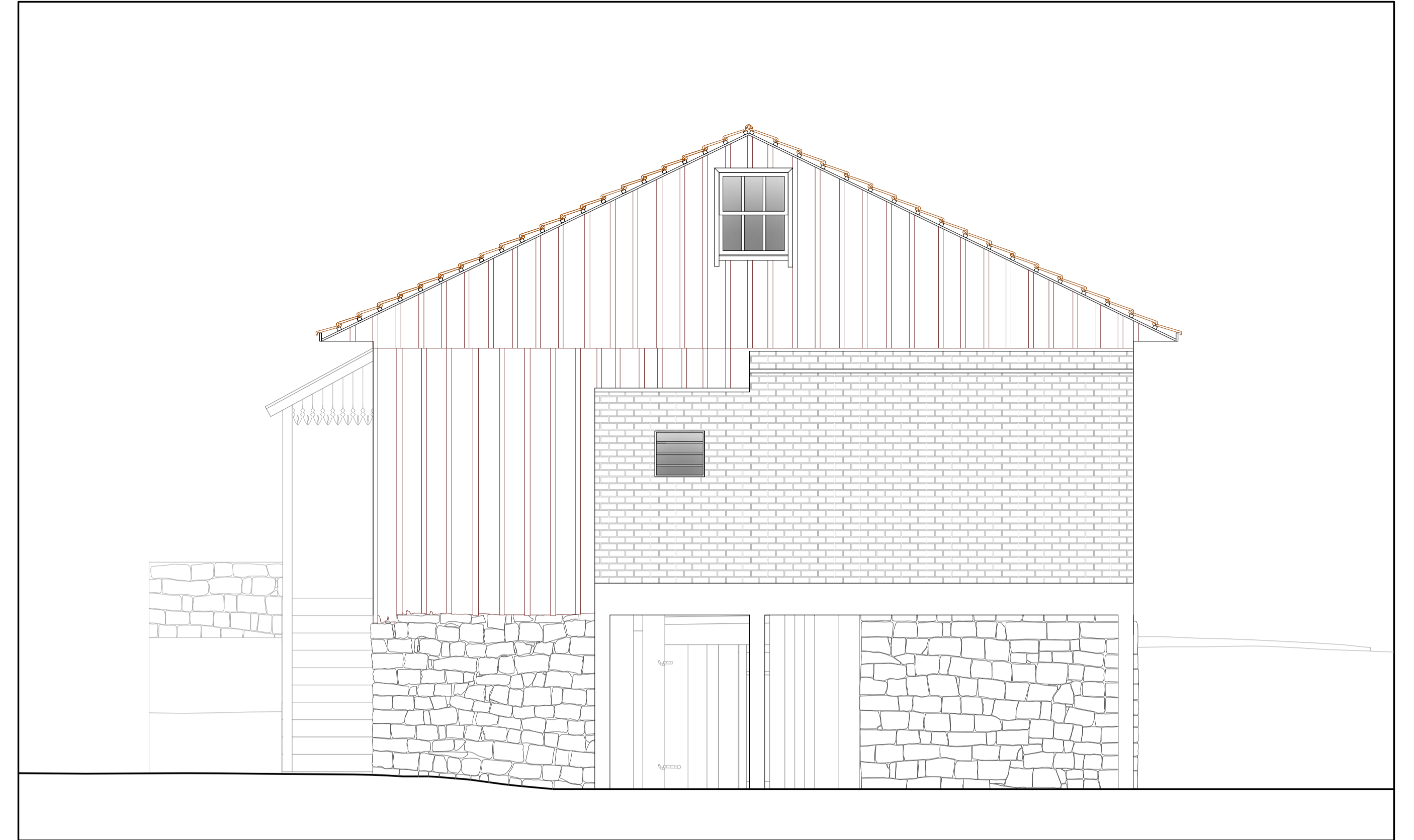
Corte AA



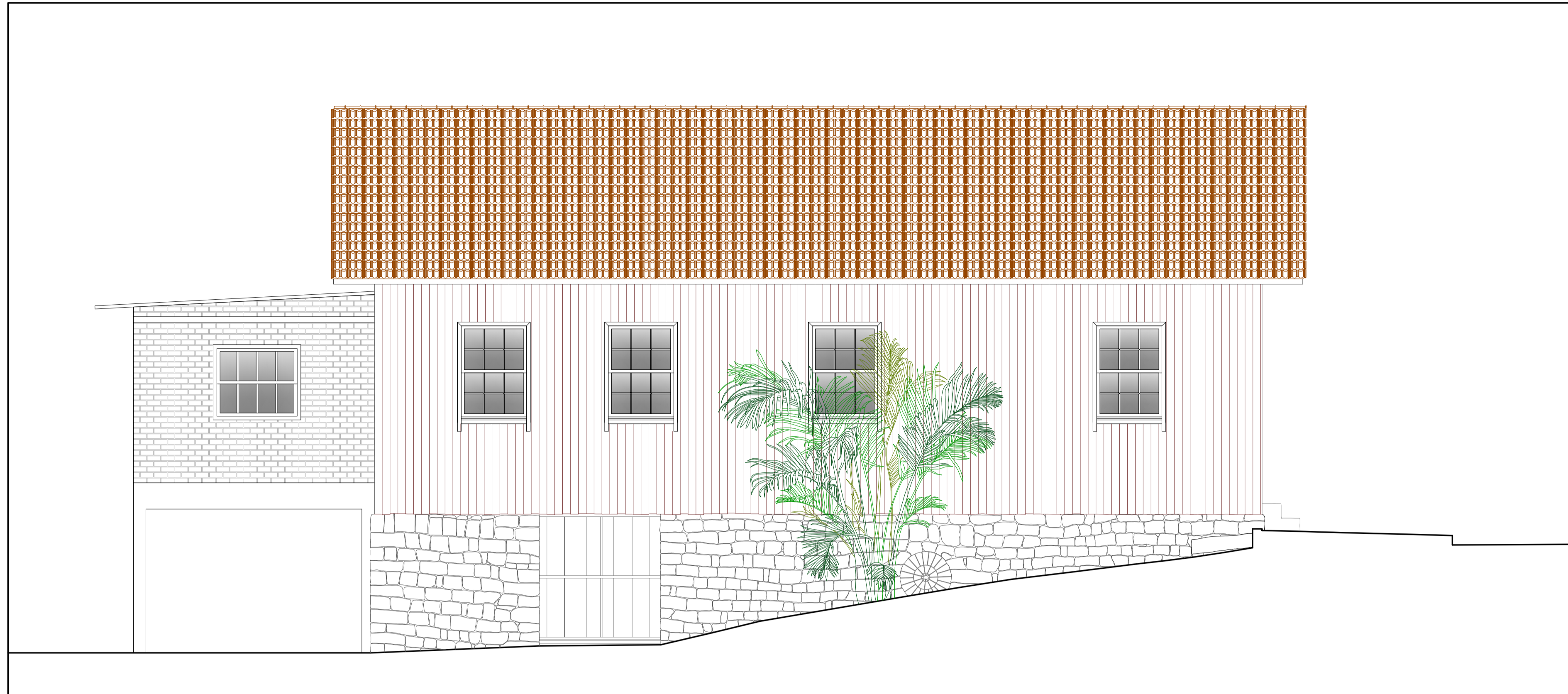
Corte BB



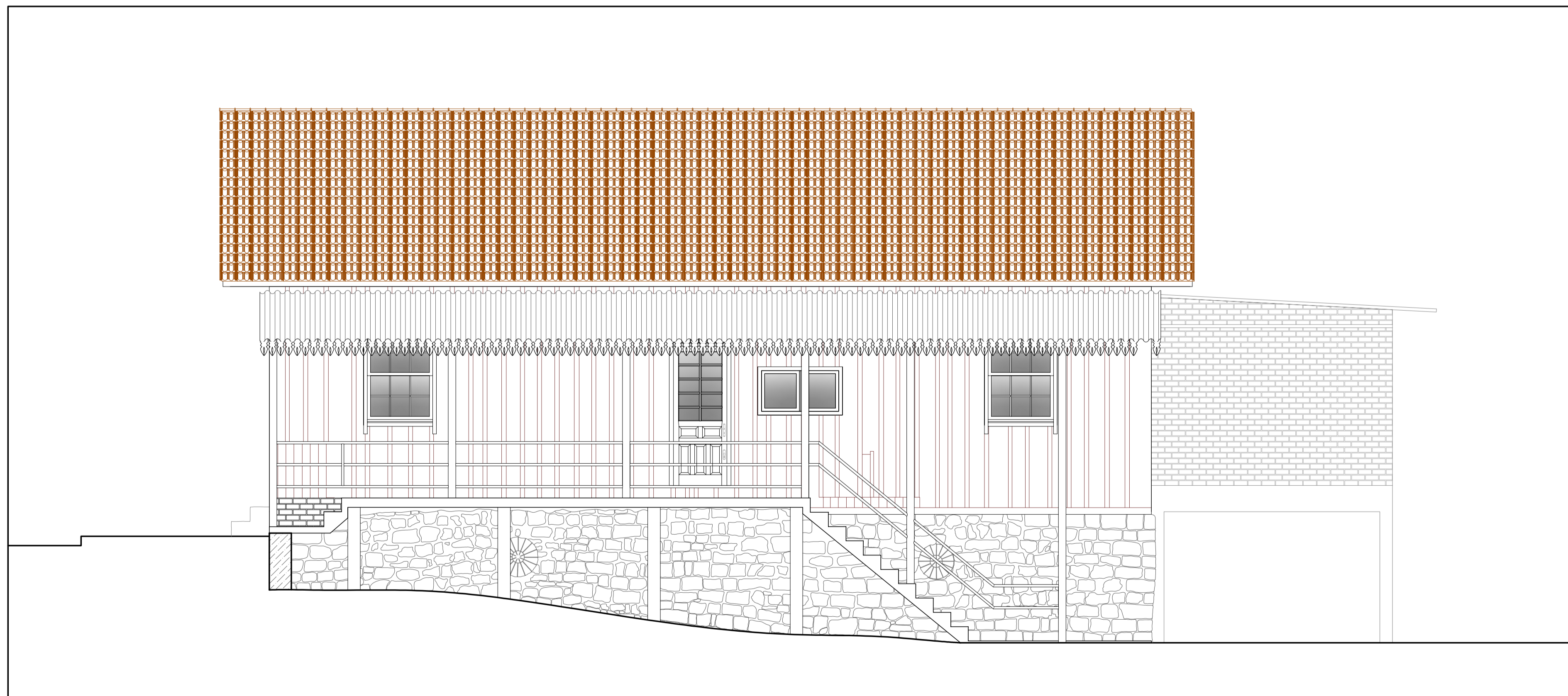
Fachada Oeste



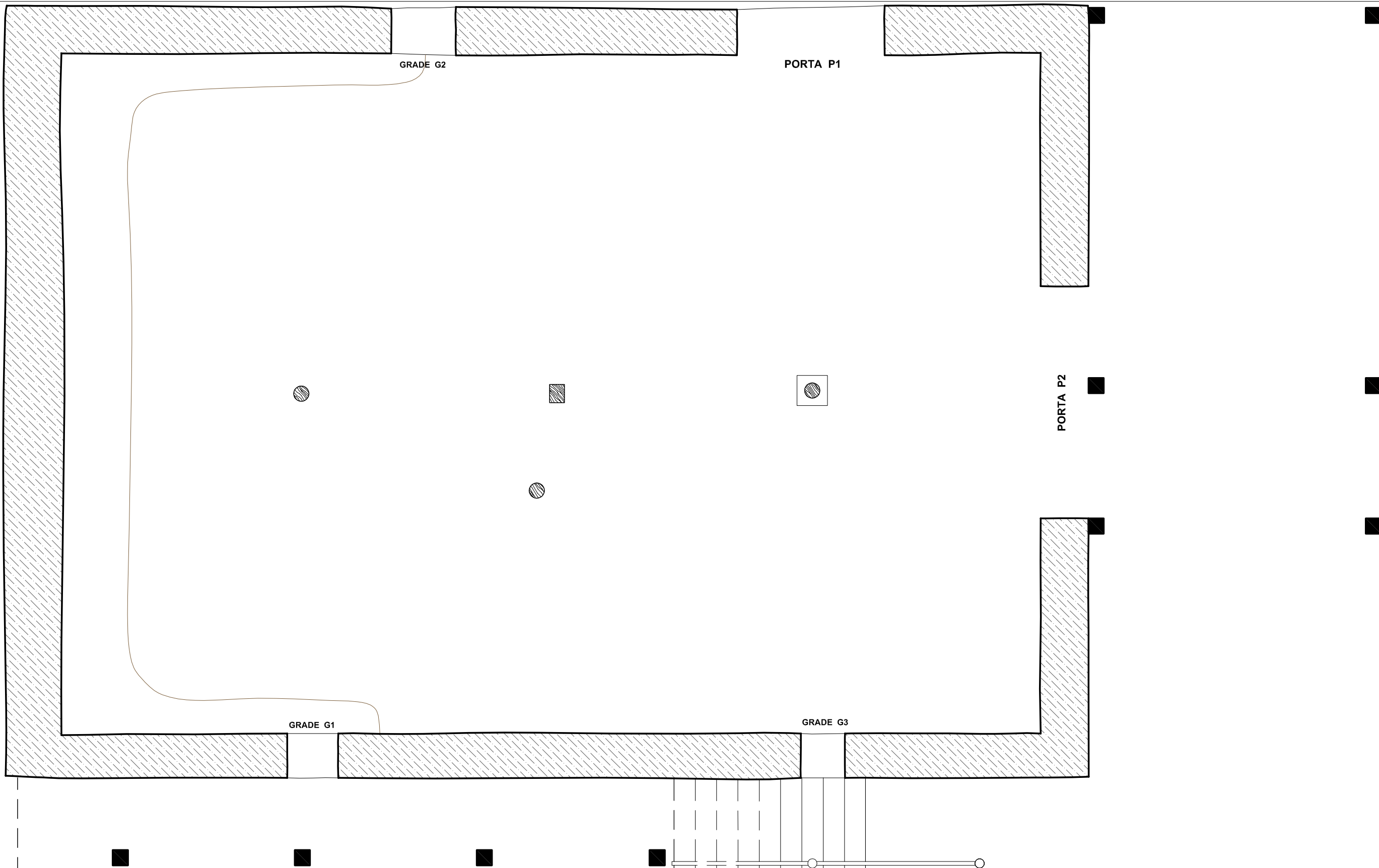
Fachada Leste



Fachada Norte



Fachada Sul



01

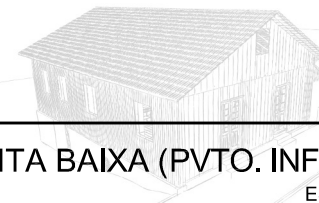
LEVANTAMENTO MÉTRICO - PLANTA BAIXA (PVTO. INFERIOR)

ESC. 1/50



EQUIPE DE ARQUITETURA E URBANISMO
ARQ. E URB. - ANA LIA BRANCHI, DOMENICO RENOSTO, PABLO CESAR UEZ E RAMON OSMAINSCHI

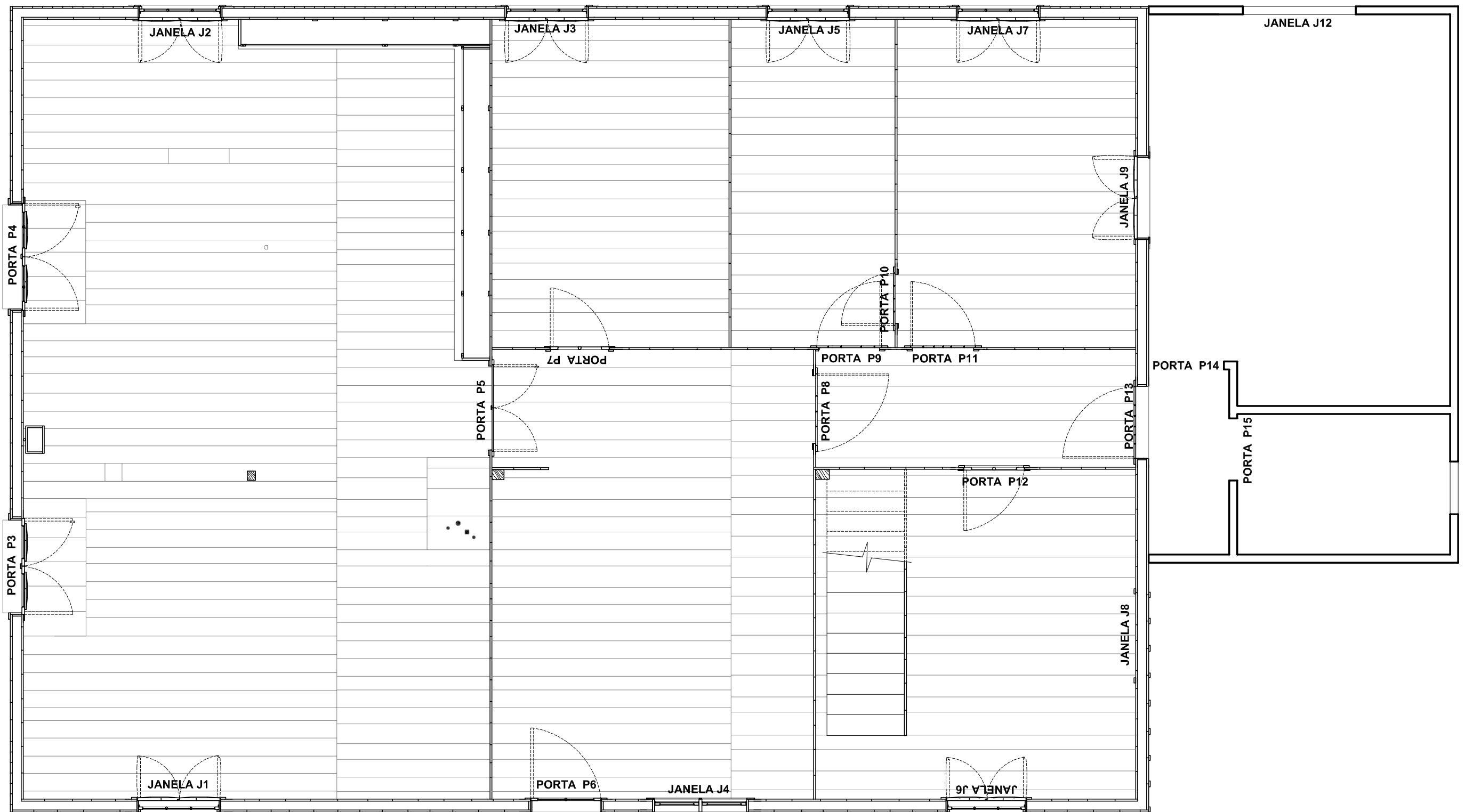
PATRIMÔNIO:
ANTIGO ARMAZÉM FACHINI
DISTRITO DE CRIÚVA - CAXIAS DO SUL



FL

01

LEVANTAMENTO MÉTRICO - PLANTA BAIXA (PVTO. INFERIOR)
ESCALA 1:50



02 ESC. 1/50

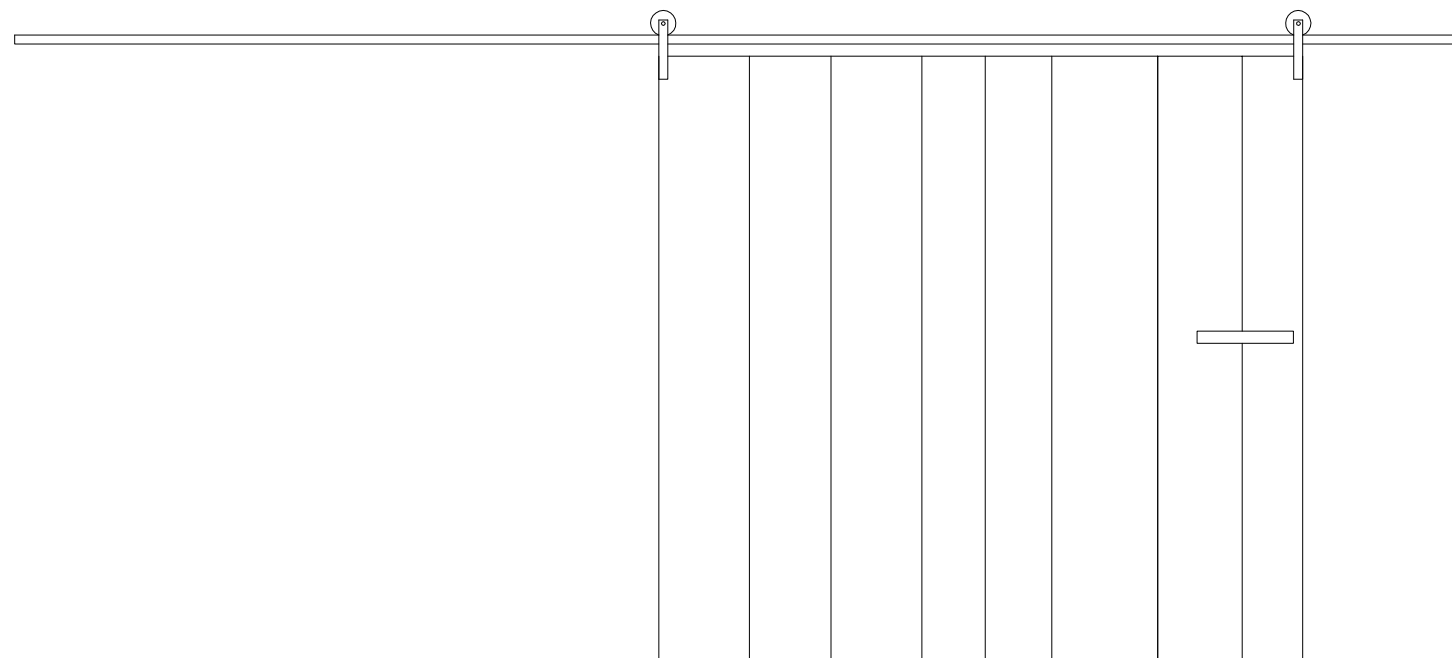
LEVANTAMENTO MÉTRICO - PLANTA BAIXA (PVTO. TÉRREO)



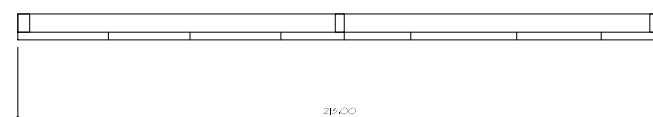
| | |
|--|--|
| EQUIPE DE ARQUITETURA E URBANISMO ARQ. E URB. - ANA LIA BRANCHI, DOMENICO RENOSTO, PABLO CESAR UEZ E RAMON OSMAINSCHI | |
| PATRIMÔNIO: ANTIGO ARMAZÉM FACHINI DISTRITO DE CRIÚVA - CAXIAS DO SUL | |
| LEVANTAMENTO MÉTRICO - PLANTA BAIXA (PVTO. TÉRREO) | |
| ESCALA 1:50 |  <div style="display: inline-block; border: 1px solid black; padding: 5px; font-size: 2em; font-weight: bold;">FL</div> <div style="display: inline-block; border: 1px solid black; padding: 5px; font-size: 3em; font-weight: bold; margin-left: 10px;">02</div> |

PORTA P1

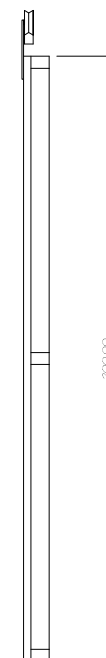
VISTA INTERNA



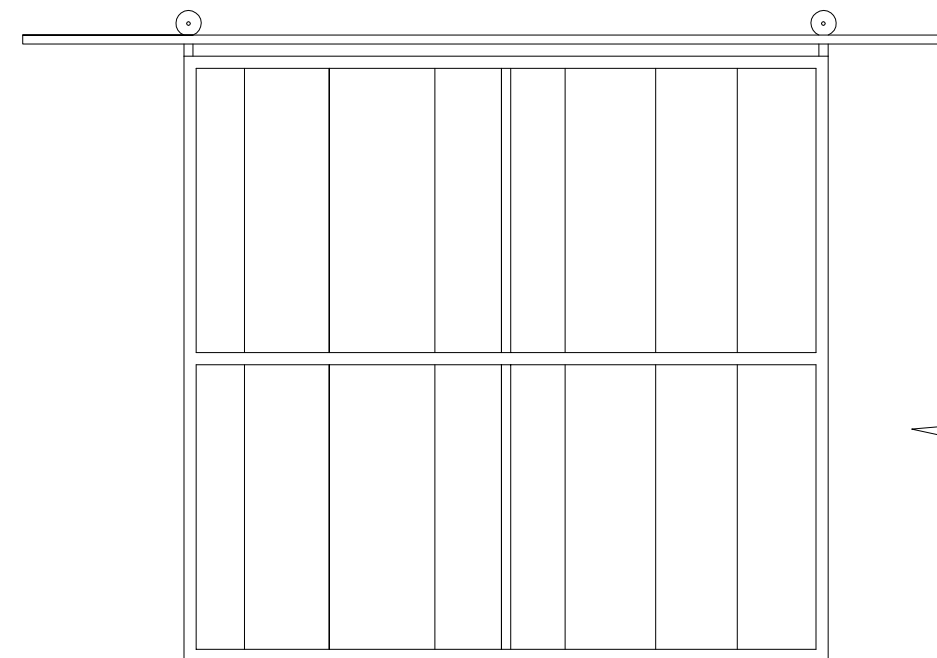
PLANTA- BAIXA



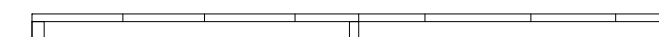
VISTA LATERAL



VISTA EXTERNA



PLANTA- BAIXA



03 LEVANTAMENTO MÉTRICO - PORTA P1

ESC. 1/25

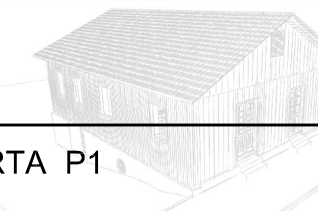
0 1 2,5m



EQUIPE DE ARQUITETURA E URBANISMO
ARQ. E URB. - ANA LIA BRANCHI, DOMENICO RENOSTO, PABLO CESAR UEZ E RAMON OSMAINSCHI

PATRIMÔNIO:
ANTIGO ARMAZÉM FACHINI
DISTRITO DE CRIÚVA - CAXIAS DO SUL

LEVANTAMENTO MÉTRICO - PORTA P1



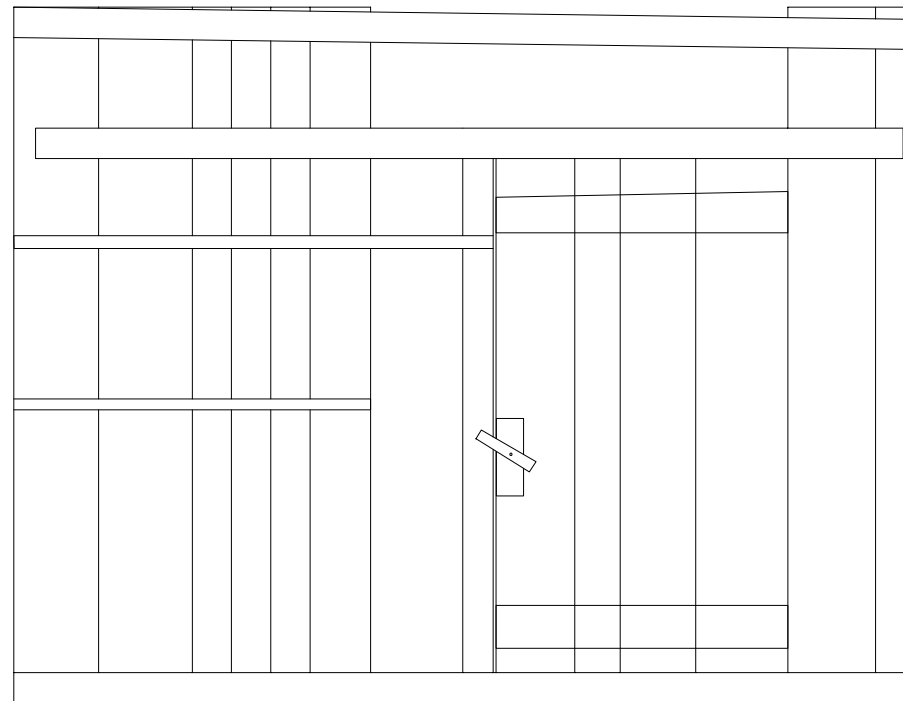
FL

03

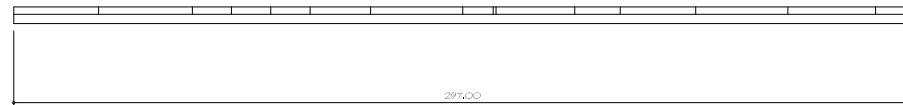
ESCALA 1:25

PORTA P2

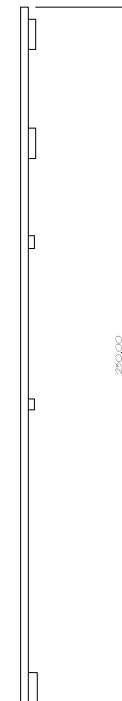
VISTA INTERNA



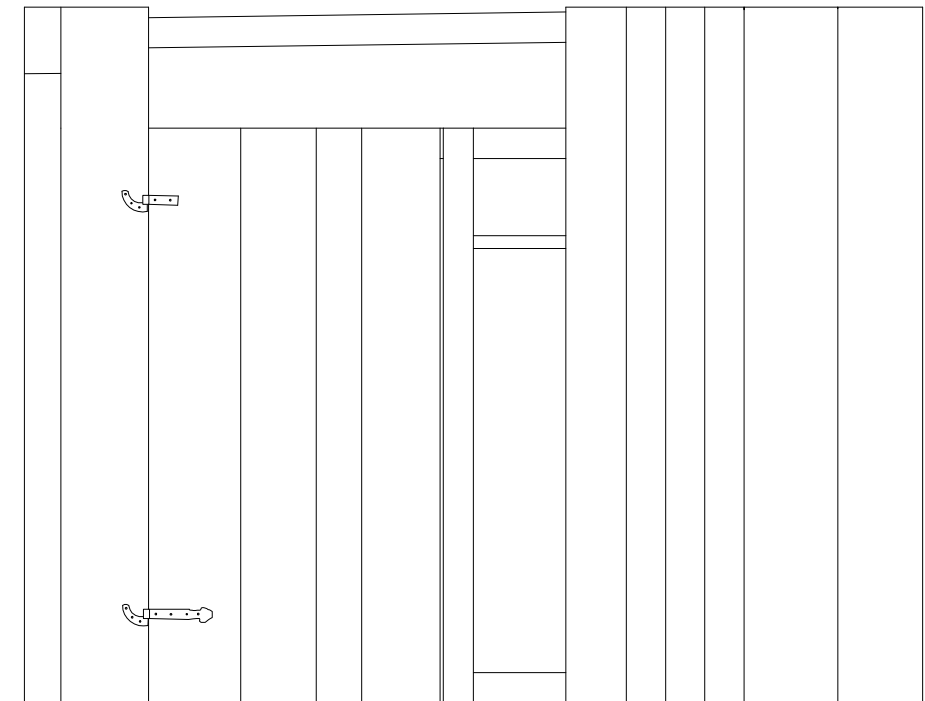
PLANTA- BAIXA



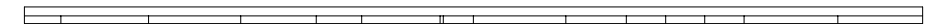
VISTA LATERAL



VISTA EXTERNA



PLANTA- BAIXA



04 LEVANTAMENTO MÉTRICO - PORTA P2

ESC. 1/25

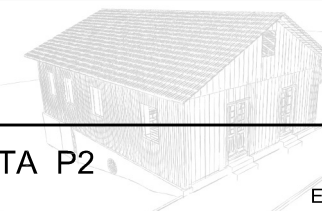
0 1 2,5m



EQUIPE DE ARQUITETURA E URBANISMO
ARQ. E URB. - ANA LIA BRANCHI, DOMENICO RENOSTO, PABLO CESAR UEZ E RAMON OSMAINSCHI

PATRIMÔNIO:
ANTIGO ARMAZÉM FACHINI
DISTRITO DE CRIÚVA - CAXIAS DO SUL

LEVANTAMENTO MÉTRICO - PORTA P2



FL

04

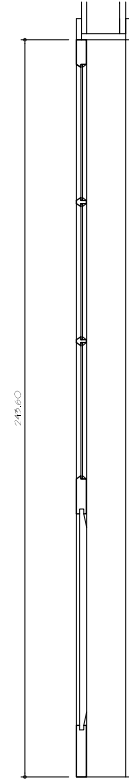
ESCALA 1:25

PORTA P3

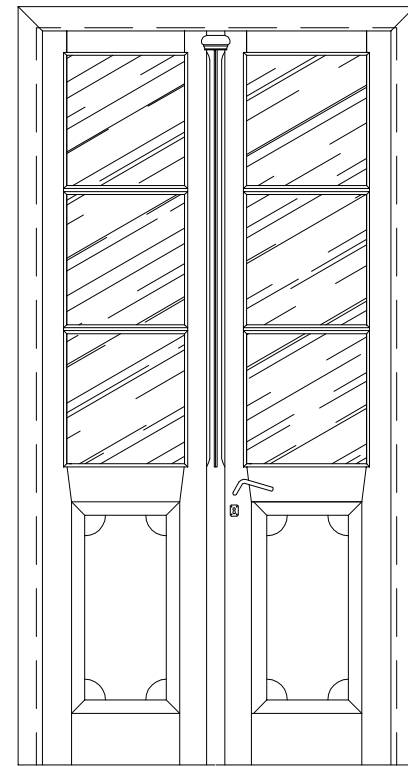
VISTA INTERNA



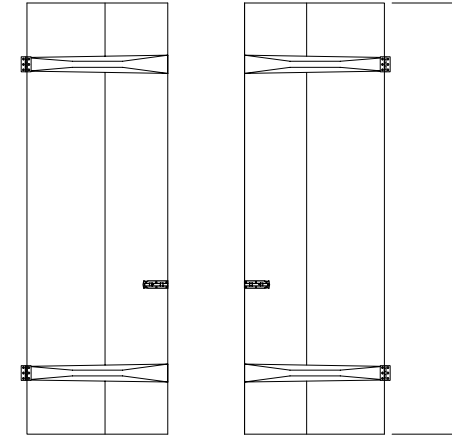
VISTA LATERAL



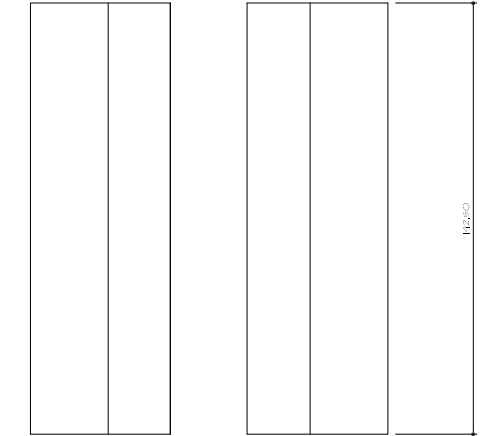
VISTA EXTERNA



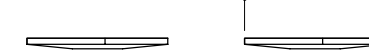
TAMPÃO VISTA INTERNA



TAMPÃO VISTA EXTERNA



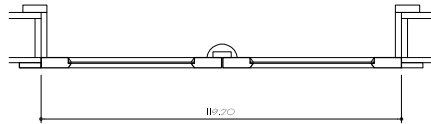
PLANTA- BAIXA



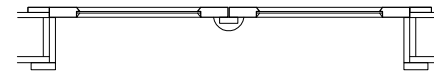
PLANTA- BAIXA



PLANTA- BAIXA



PLANTA- BAIXA



05 LEVANTAMENTO MÉTRICO - PORTA P3

ESC. 1/25

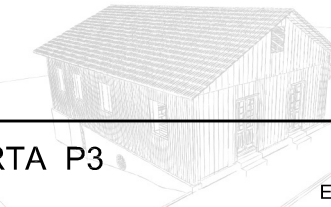
0 1 2,5m



EQUIPE DE ARQUITETURA E URBANISMO
ARQ. E URB. - ANA LIA BRANCHI, DOMENICO RENOSTO, PABLO CESAR UEZ E RAMON OSMAINSCHI

PATRIMÔNIO:
ANTIGO ARMAZÉM FACHINI
DISTRITO DE CRIÚVA - CAXIAS DO SUL

LEVANTAMENTO MÉTRICO - PORTA P3



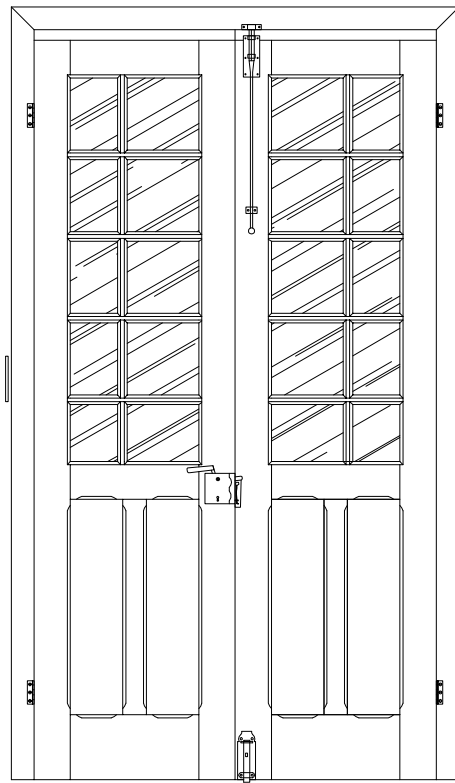
FL

05

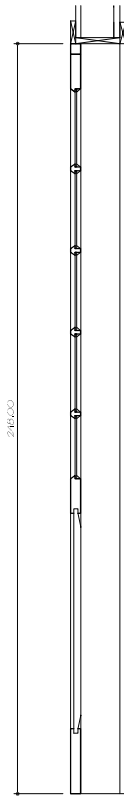
ESCALA 1:25

PORTA P4

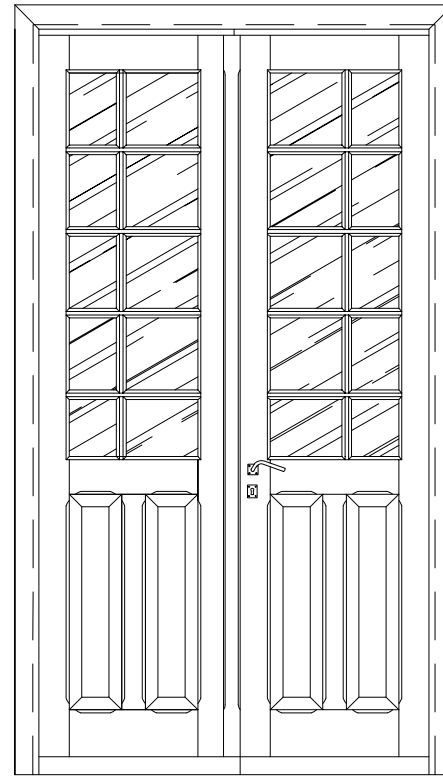
VISTA INTERNA



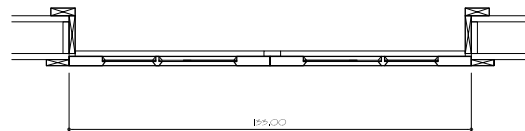
VISTA LATERAL



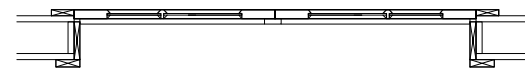
VISTA EXTERNA



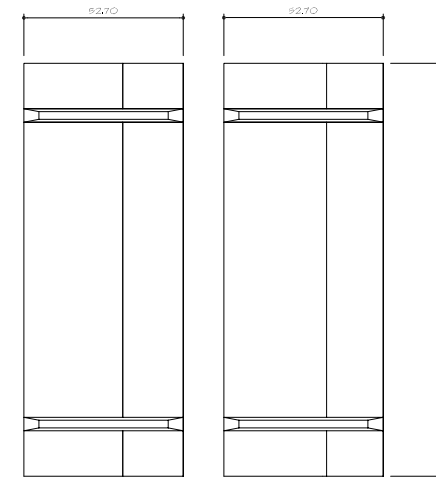
PLANTA- BAIXA



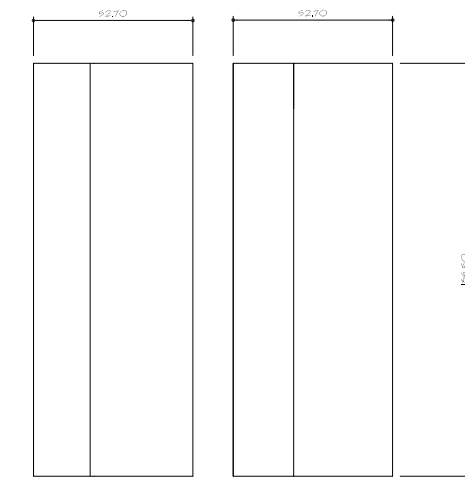
PLANTA- BAIXA



VISTA INTERNA



VISTA EXTERNA



PLANTA- BAIXA



PLANTA- BAIXA



06 LEVANTAMENTO MÉTRICO - PORTA P4

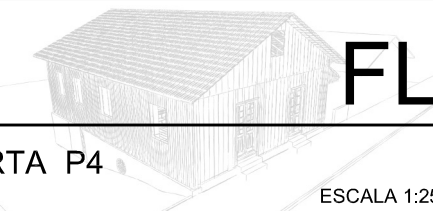
ESC. 1/25

0 1 2,5m



EQUIPE DE ARQUITETURA E URBANISMO
ARQ. E URB. - ANA LIA BRANCHI, DOMENICO RENOSTO, PABLO CESAR UEZ E RAMON OSMAINSCHI

PATRIMÔNIO:
ANTIGO ARMAZÉM FACHINI
DISTRITO DE CRIÚVA - CAXIAS DO SUL



FL

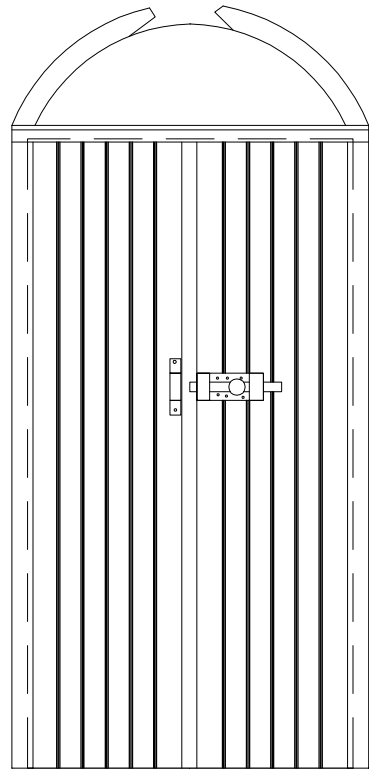
06

LEVANTAMENTO MÉTRICO - PORTA P4

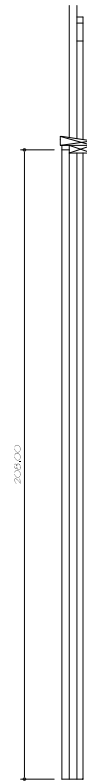
ESCALA 1:25

PORTA P5

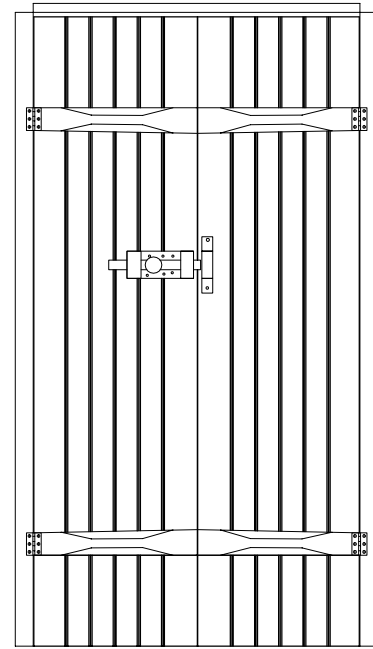
VISTA EXTERNA



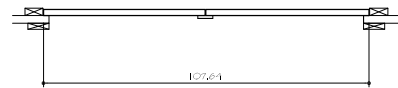
VISTA LATERAL



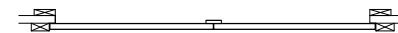
VISTA INTERNA



PLANTA- BAIXA

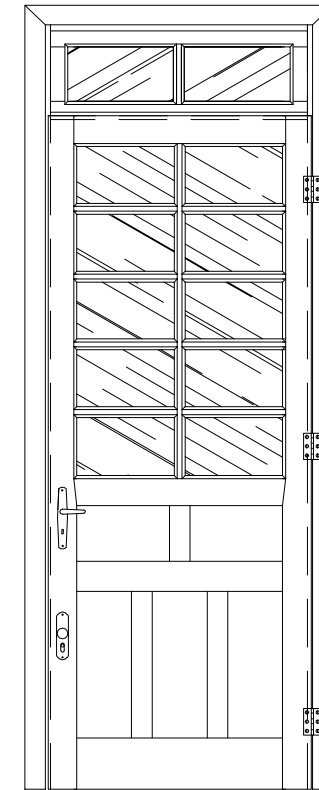


PLANTA- BAIXA

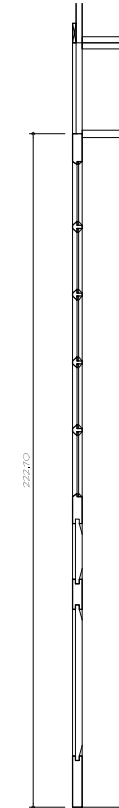


PORTA P6

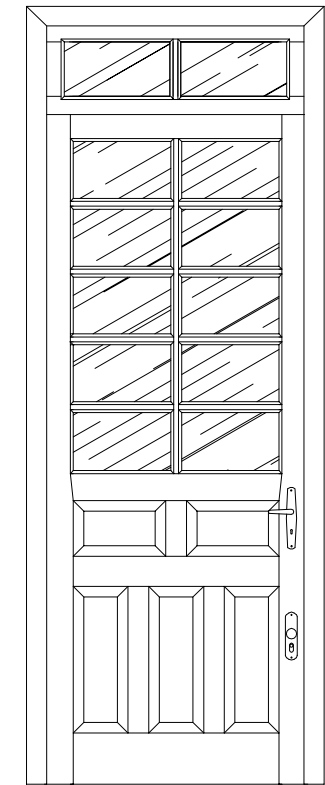
VISTA INTERNA



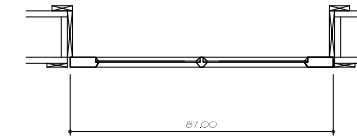
VISTA LATERAL



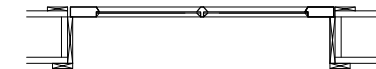
VISTA EXTERNA



PLANTA- BAIXA



PLANTA- BAIXA



07 LEVANTAMENTO MÉTRICO - PORTAS P5 E P6

ESC. 1/25

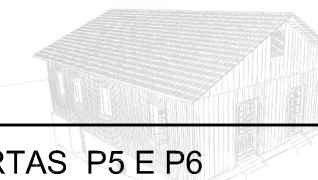
0 1 2,5m



EQUIPE DE ARQUITETURA E URBANISMO
ARQ. E URB. - ANA LIA BRANCHI, DOMENICO RENOSTO, PABLO CESAR UEZ E RAMON OSMAINSCHI

PATRIMÔNIO:
ANTIGO ARMAZÉM FACHINI
DISTRITO DE CRIÚVA - CAXIAS DO SUL

LEVANTAMENTO MÉTRICO - PORTAS P5 E P6

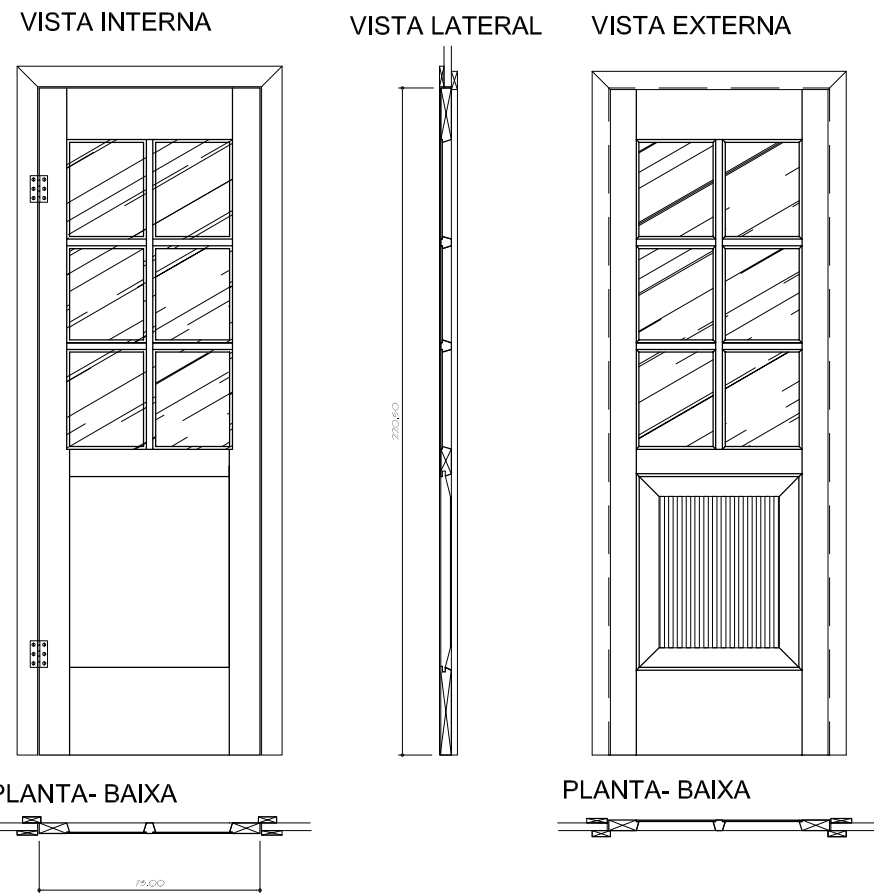


FL

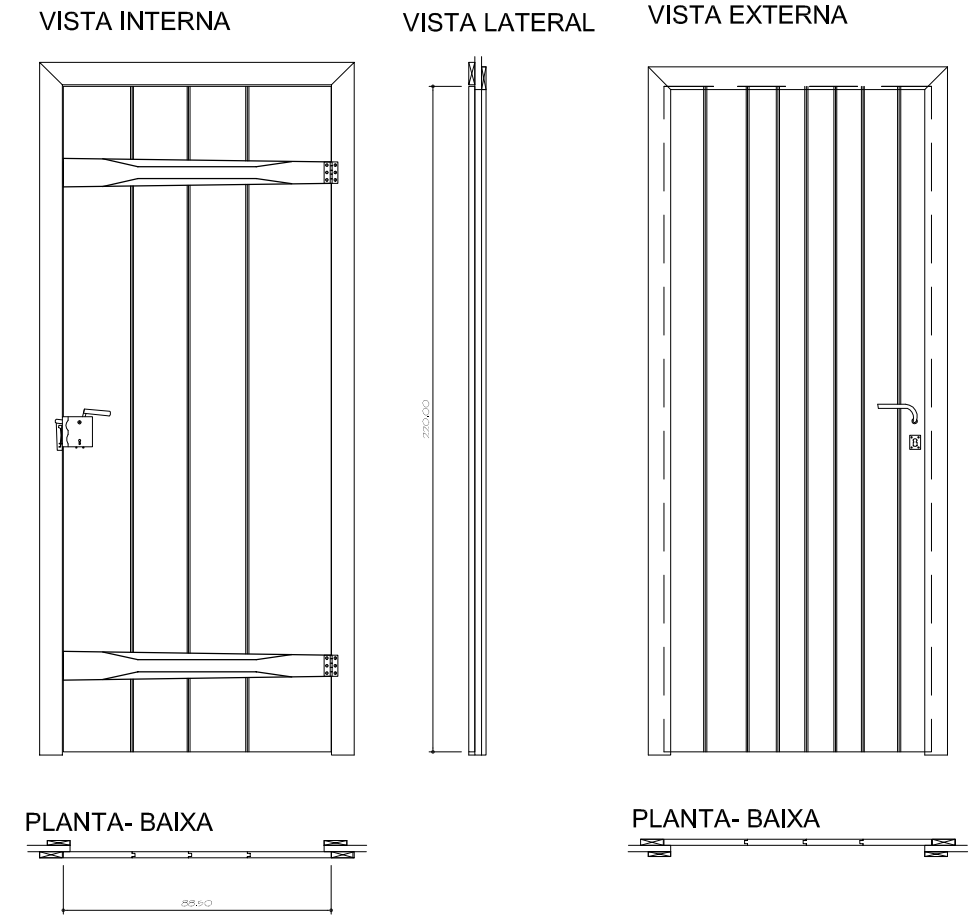
07

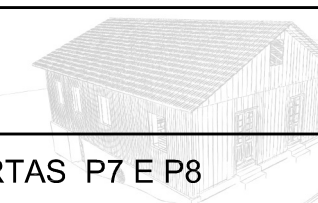
ESCALA 1:25

PORTA P7

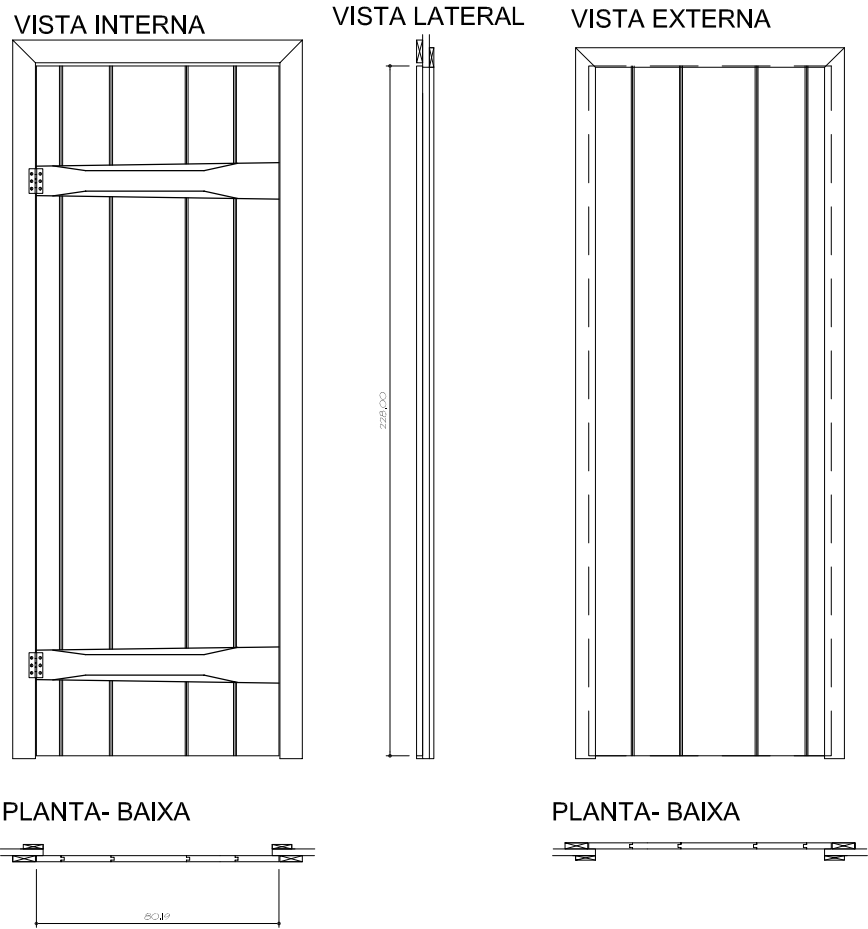


PORTA P8

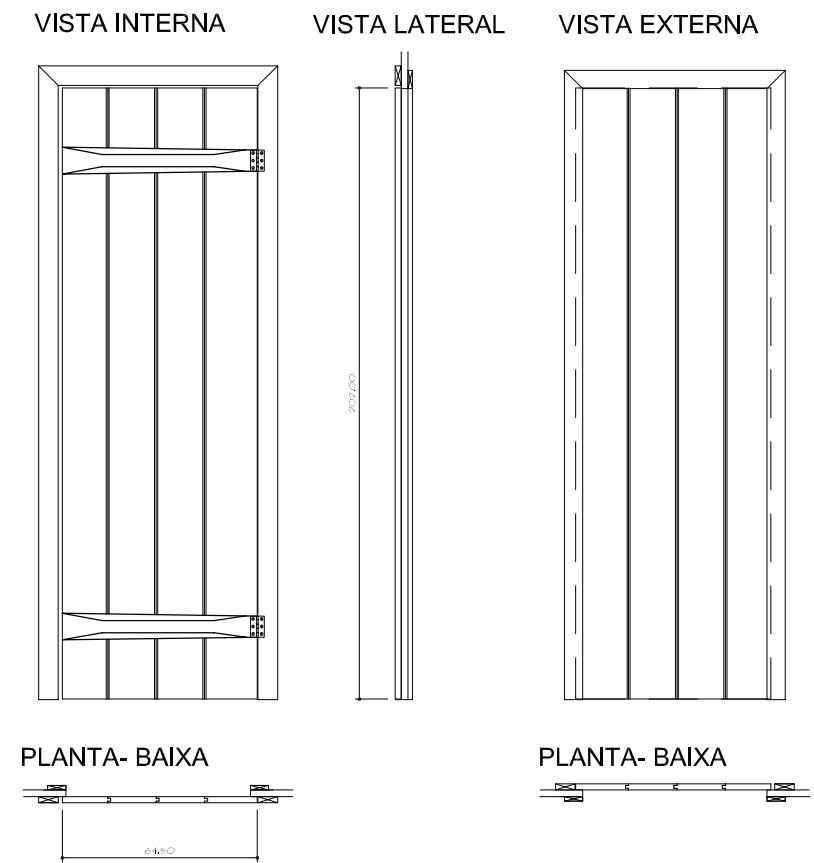


| | |
|---|---|
| EQUIPE DE ARQUITETURA E URBANISMO | |
| ARQ. E URB. - ANA LIA BRANCHI, DOMENICO RENOSTO, PABLO CESAR UEZ E RAMON OSMAINSCHI | |
| PATRIMÔNIO: |  |
| ANTIGO ARMAZÉM FACHINI | |
| DISTRITO DE CRIÚVA - CAXIAS DO SUL | FL |
| LEVANTAMENTO MÉTRICO - PORTAS P7 E P8 | 08 |
| ESCALA 1:25 | |

PORTA P9



PORTA P10



09 LEVANTAMENTO MÉTRICO - PORTAS P9 E P10

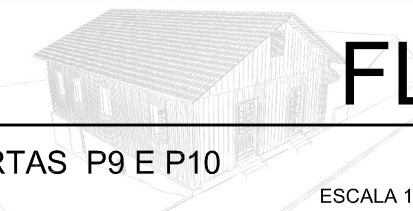
ESC. 1/25

0 1 2,5m



EQUIPE DE ARQUITETURA E URBANISMO
 ARQ. E URB. - ANA LIA BRANCHI, DOMENICO RENOSTO, PABLO CESAR UEZ E RAMON OSMAINSCHI

PATRIMÔNIO:
 ANTIGO ARMAZÉM FACHINI
 DISTRITO DE CRIÚVA - CAXIAS DO SUL



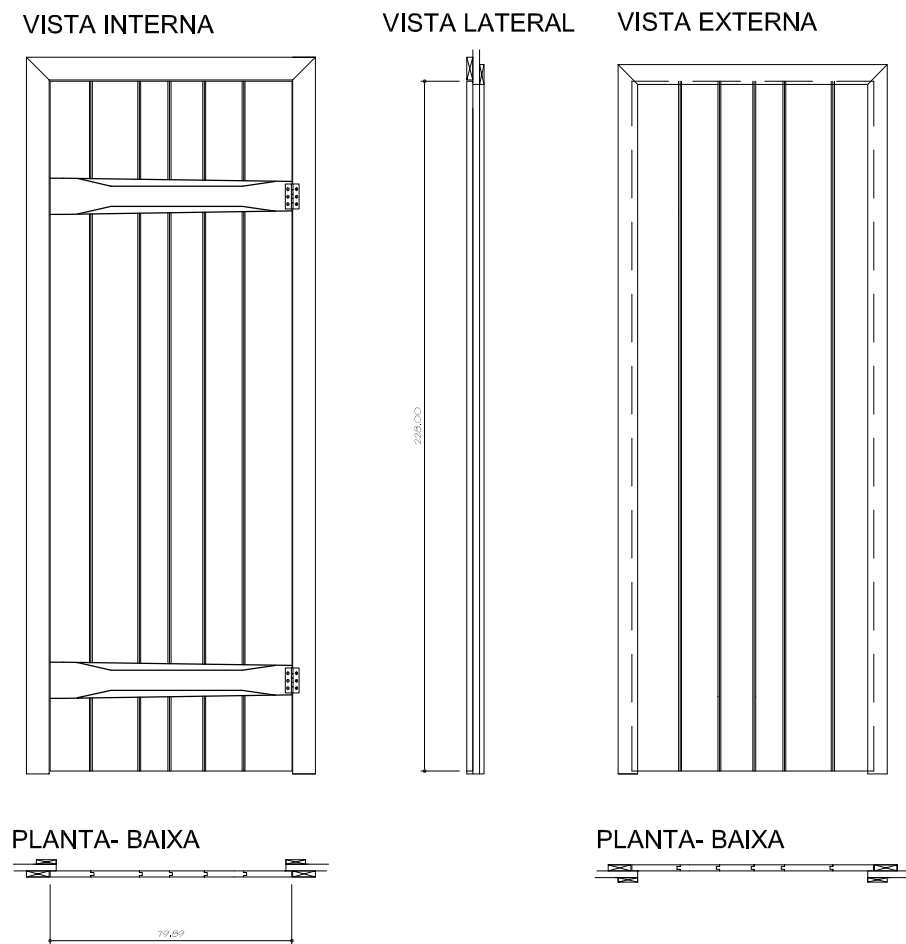
FL

09

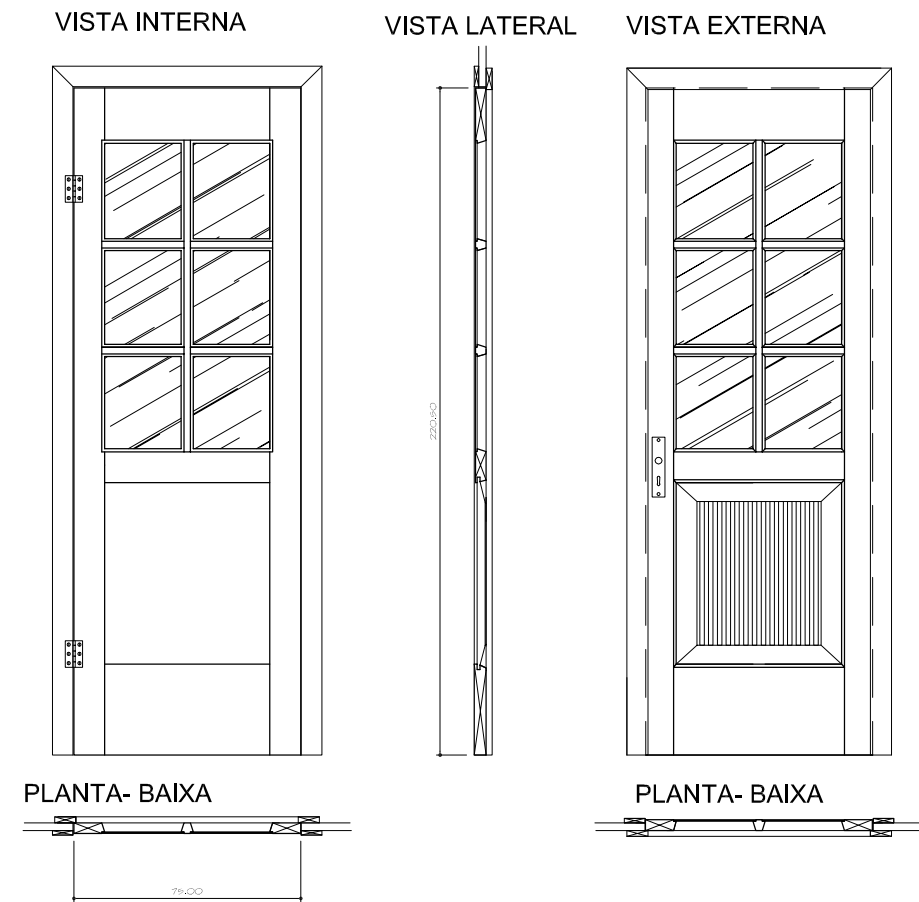
LEVANTAMENTO MÉTRICO - PORTAS P9 E P10

ESCALA 1:25

PORTA P11



PORTA P12



10 LEVANTAMENTO MÉTRICO - PORTAS P11 E P12

ESC. 1/25

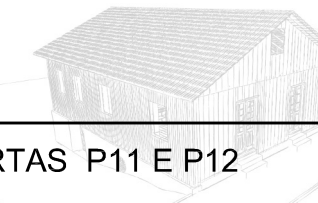
0 1 2,5m



EQUIPE DE ARQUITETURA E URBANISMO
ARQ. E URB. - ANA LIA BRANCHI, DOMENICO RENOSTO, PABLO CESAR UEZ E RAMON OSMAINSCHI

PATRIMÔNIO:
ANTIGO ARMAZÉM FACHINI
DISTRITO DE CRIÚVA - CAXIAS DO SUL

LEVANTAMENTO MÉTRICO - PORTAS P11 E P12



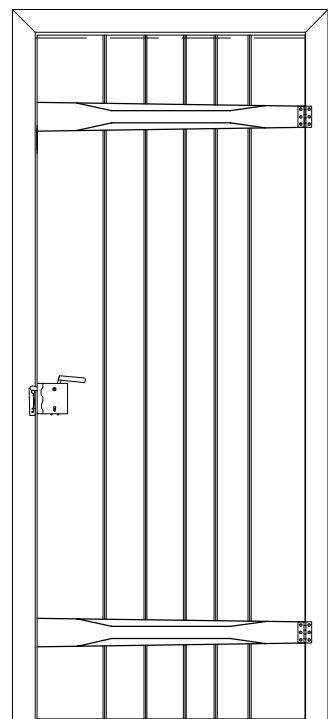
FL

10

ESCALA 1:25

PORTA P13

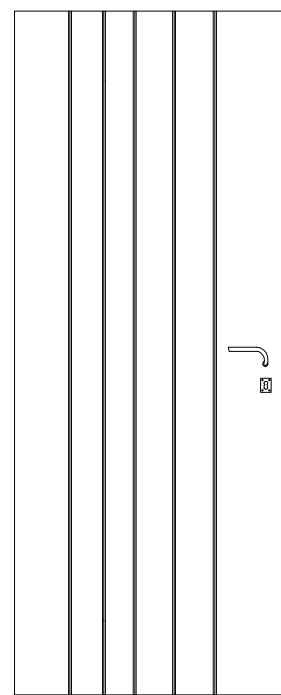
VISTA INTERNA



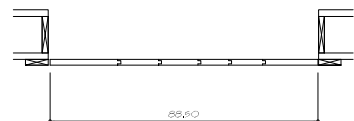
VISTA LATERAL



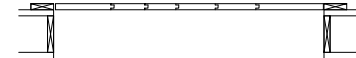
VISTA EXTERNA



PLANTA- BAIXA

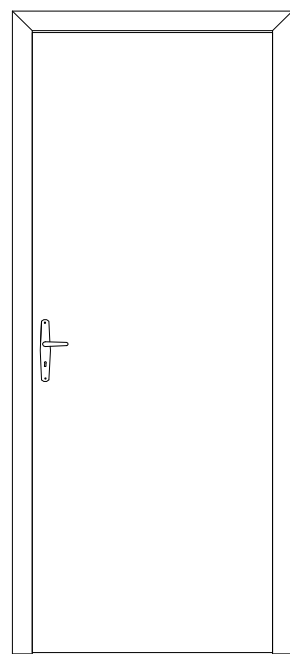


PLANTA- BAIXA

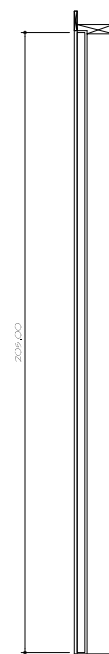


PORTA P14

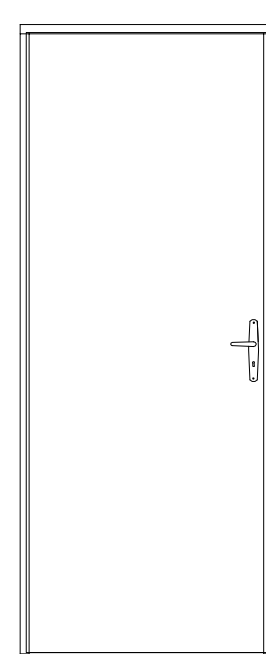
VISTA INTERNA



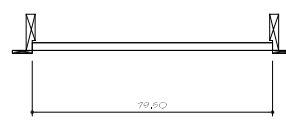
VISTA LATERAL



VISTA EXTERNA



PLANTA- BAIXA

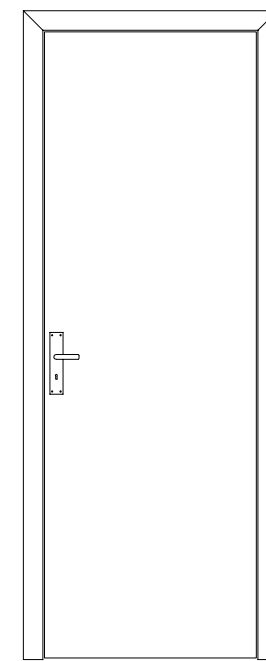


PLANTA- BAIXA

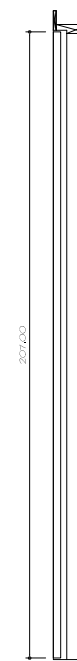


PORTA P15

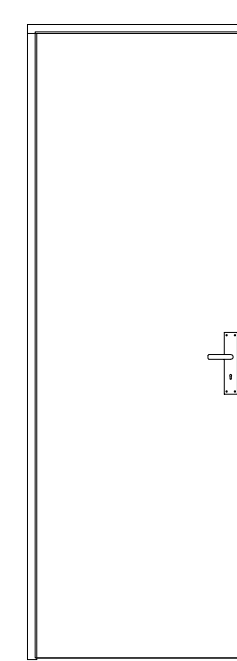
VISTA INTERNA



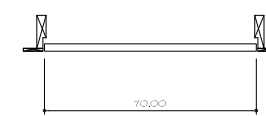
VISTA LATERAL



VISTA EXTERNA



PLANTA- BAIXA



PLANTA- BAIXA



11 LEVANTAMENTO MÉTRICO - PORTAS P13, P14 E P15

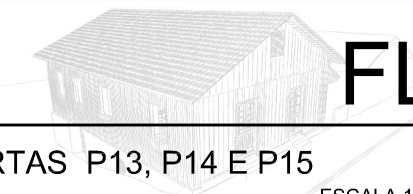
ESC. 1/25

0 1 2,5m



EQUIPE DE ARQUITETURA E URBANISMO
ARQ. E URB. - ANA LIA BRANCHI, DOMENICO RENOSTO, PABLO CESAR UEZ E RAMON OSMAINSCHI

PATRIMÔNIO:
ANTIGO ARMAZÉM FACHINI
DISTRITO DE CRIÚVA - CAXIAS DO SUL

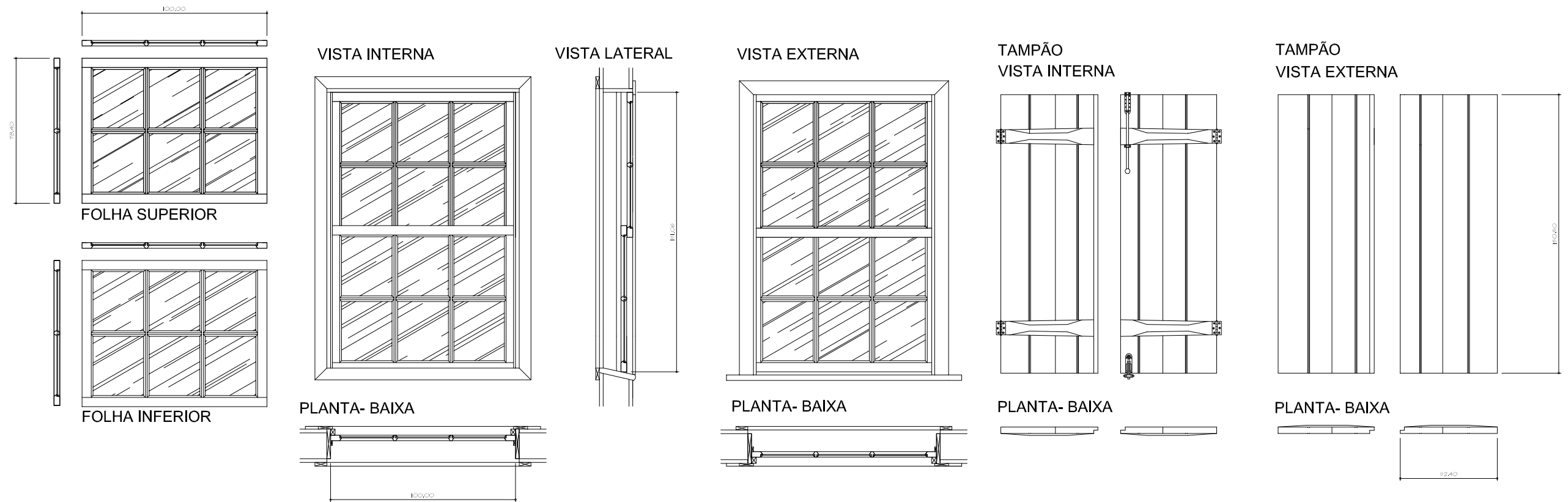


FL

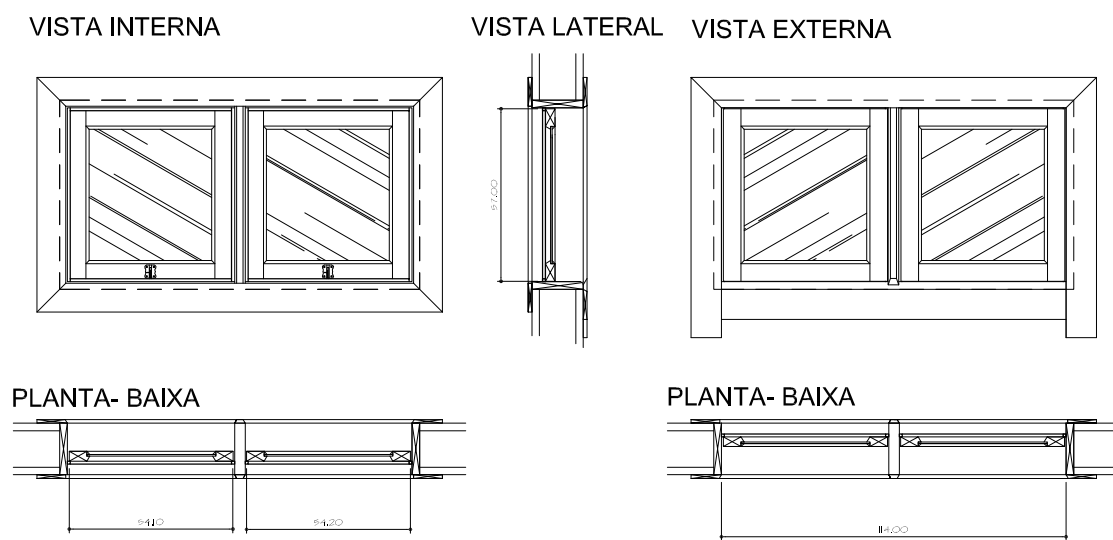
11

LEVANTAMENTO MÉTRICO - PORTAS P13, P14 E P15

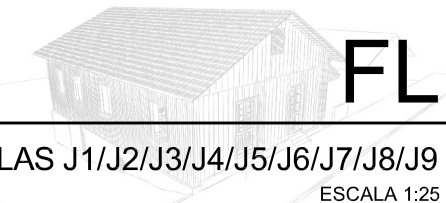
ESCALA 1:25

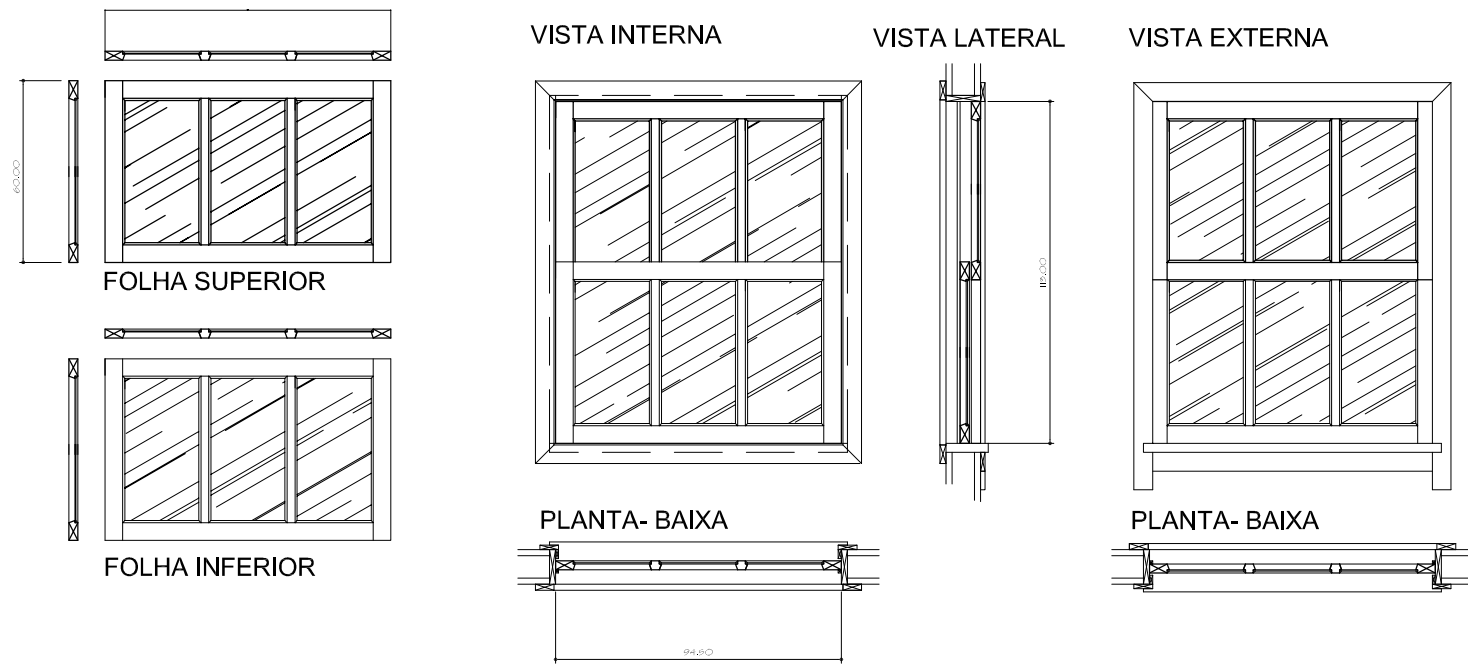


ESQUADRIA J1 / J2 / J3 / J5 / J6 / J7 / J8 / J9

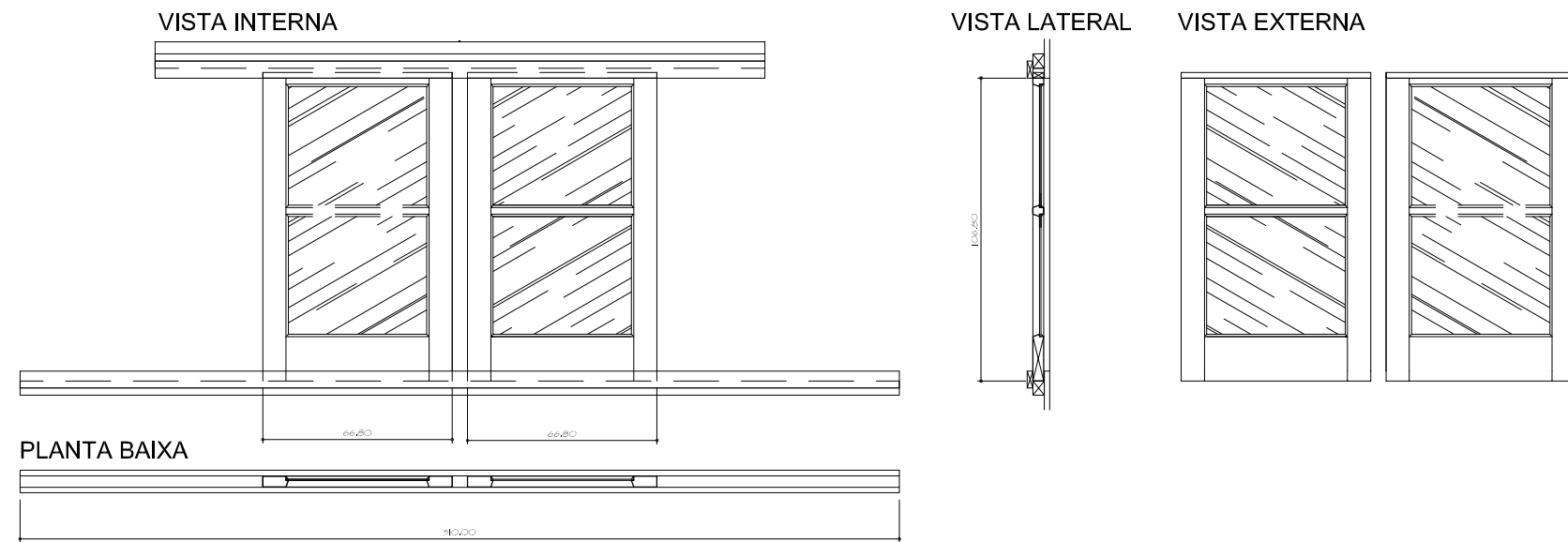


ESQUADRIA J4





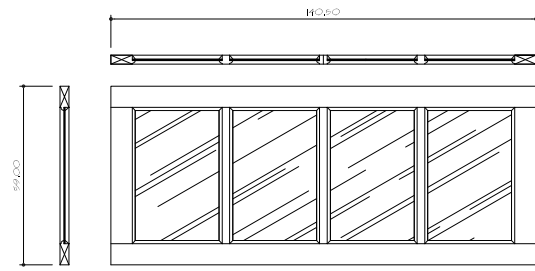
ESQUADRIA J10



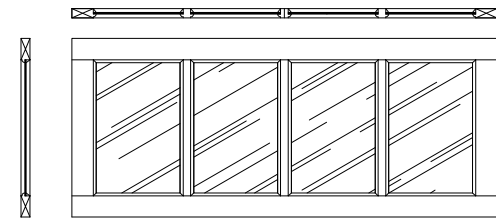
ESQUADRIA J11



| | |
|---|-------------|
| EQUIPE DE ARQUITETURA E URBANISMO | |
| ARQ. E URB. - ANA LIA BRANCHI, DOMENICO RENOSTO, PABLO CESAR UEZ E RAMON OSMAINSCHI | |
| PATRIMÔNIO: | |
| ANTIGO ARMAZÉM FACHINI | |
| DISTRITO DE CRIÚVA - CAXIAS DO SUL | FL |
| LEVANTAMENTO MÉTRICO - JANELAS J10 E J11 | 13 |
| | ESCALA 1:25 |

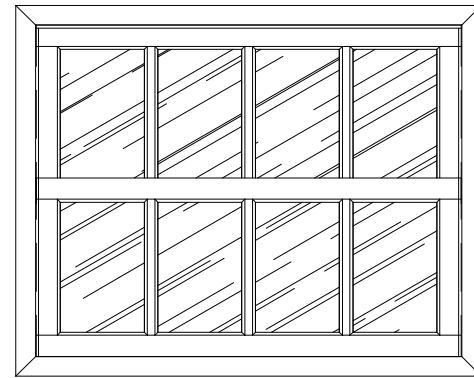


FOLHA SUPERIOR



FOLHA INFERIOR

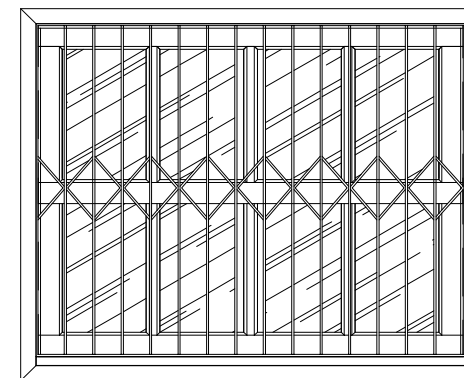
VISTA INTERNA



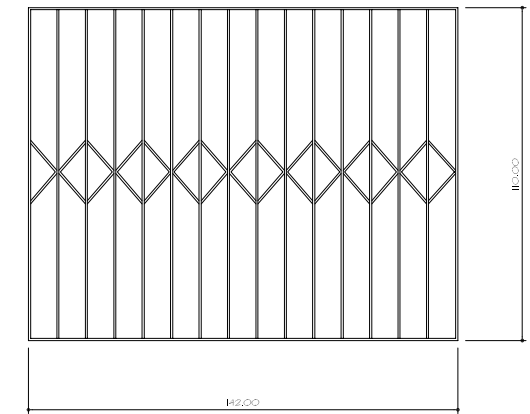
VISTA LATERAL



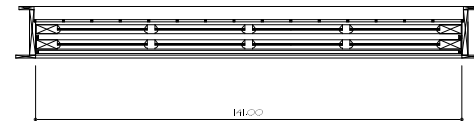
VISTA EXTERNA



GRADE



PLANTA- BAIXA

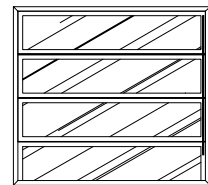


PLANTA- BAIXA

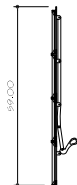


ESQUADRIA J12

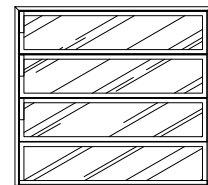
VISTA INTERNA



VISTA LATERAL



VISTA EXTERNA



PLANTA- BAIXA

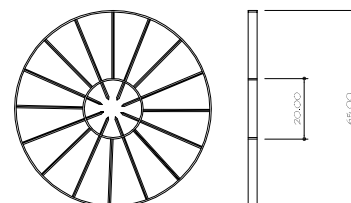


PLANTA- BAIXA

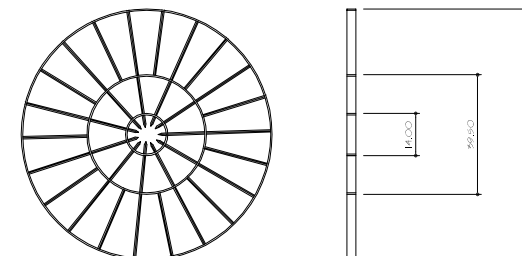


ESQUADRIA J13

GRADE G1



GRADE G2



GRADE G3

